



CHERRY PLACE

PLOT 5



Maple Place & Cherry Place. GU9 9TE

01252 722400 enquiries@bournehomes.co.uk www.bournehomes.co.uk

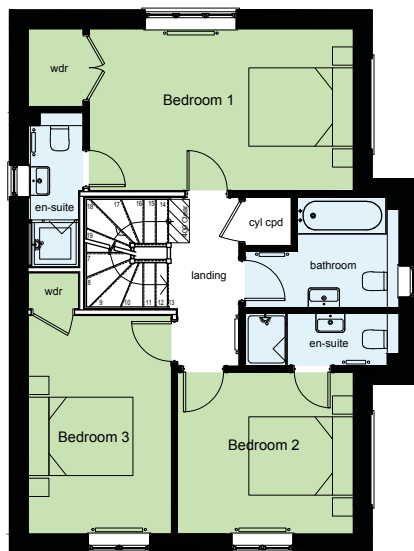


CHERRY PLACE

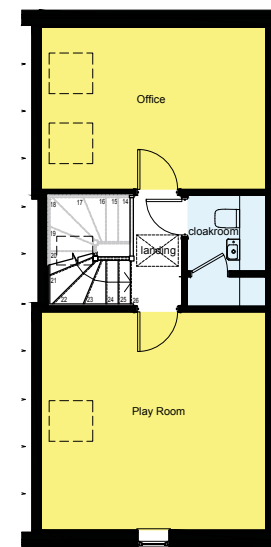
PLOT 5 GROUND FLOOR



PLOT 5 FIRST FLOOR



PLOT 5 SECOND FLOOR



Living / Dining	6231 x 5932mm	20'5 x 19'6ft
Kitchen	6228 x 4600mm	20'5 x 15'1ft
Downstairs WC	1666 x 892mm	2'6 x 2'11ft

Bedroom 1	5053 x 3116mm	16'7 x 10'3ft
Bedroom 1 en-suite	2974 x 1052mm	9'9 x 3'5ft
Bedroom 2	3360 x 3116mm	11 x 10'3ft
Bedroom 2 en-suite	2949 x 1003mm	9'8 x 3'3ft
Bedroom 3	4180 x 2739mm	13'9 x 9ft
Bathroom	2945 x 2101mm	9'8 x 6'11ft

Office	4310 x 3132mm	14'2 x 10'3ft
Play room	4307 x 4215mm	14'2 x 13'10ft
Cloakroom	2130 x 1497mm	7 x 4'11ft

Total area 178.01 Sq m 1,916 Sq ft

Includes rooms in roof of 41.44 Sq m 446 Sq ft
(All areas measured to perimeter walls)

Proposed roof windows and playroom window shown to 2nd floor, subject to planning