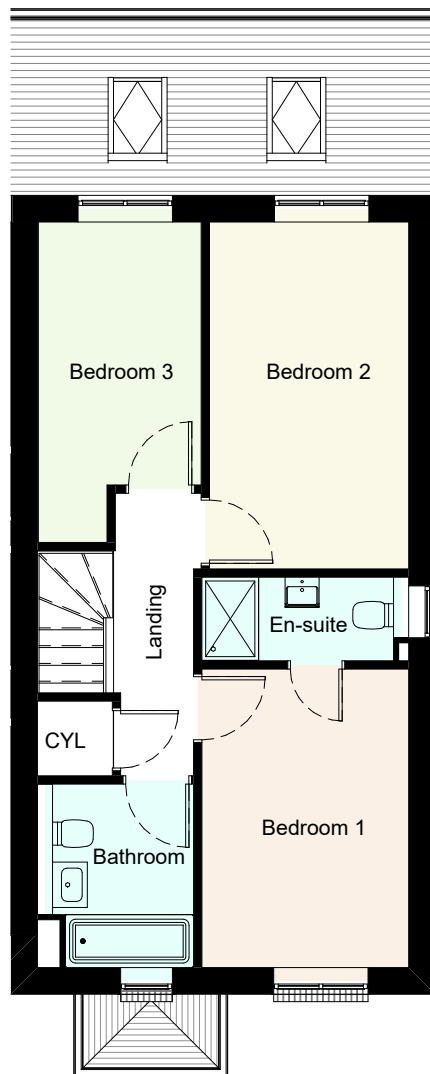


Ground floor



First Floor

Room Dimensions - Plot 9

Room	Length (m)	Width (m)	Length (ft)	Width (ft)
Kitchen	2.76 m	4.04 m	9' - 1"	13' - 3"
Living/Dining Room	4.89 m	6.25 m	16' - 0"	20' - 6"
Bedroom 1	3.92 m	2.71 m	12' - 10"	8' - 11"
Bedroom 2	4.56 m	2.61 m	15' - 0"	8' - 7"
Bedroom 3	4.21 m	2.14 m	13' - 10"	7' - 0"

Area Schedule (GIA) - Plot 9

Area	Area (sqft)
P9 Ground Floor	60 m <sup>2</sup> / 643 ft <sup>2</sup>
P9 First Floor	49 m <sup>2</sup> / 525 ft <sup>2</sup>

Job Title  
The Orchards, Great Kimble, Bucks

Drawing Title  
Marketing Plan - Plot 9

Scale  
1:100 @ A4



Project Originator Volume Level Type Role Drawing No Rev  
7038 -ECE - V5 - XX - GA - A - 06520\_C1

Status

INFORMATION

Rev Date Revision Details Dr Ch  
C1 05.10.22 Construction Issue SN JB  
P1 26.08.22 Preliminary Issue SN JB



London: 76 Great Suffolk Street, London, SE1 0BL  
T 020 7928 2773 E london@ecearchitecture.com  
Sussex: 64-68 Brighton Road, Worthing, West Sussex, BN11 2EN  
T 01903 248777 E sussex@ecearchitecture.com  
Bristol: Westworks, Beacon Tower, Colston Street, Bristol, BS1 4XE  
T 0117 214 1101 E bristol@ecewestworks.com

**ECE Architecture**  
www.ecearchitecture.com