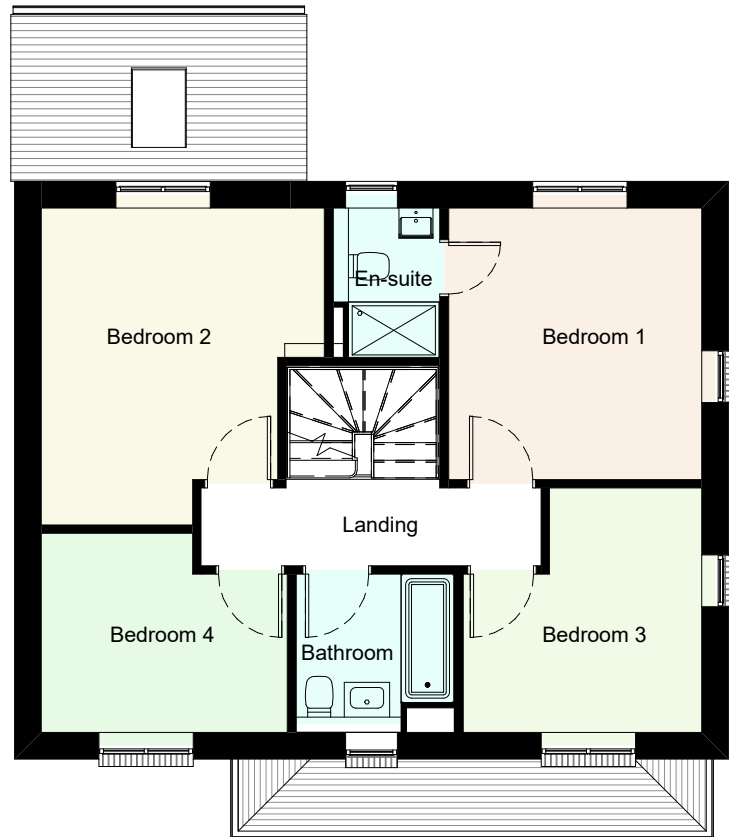
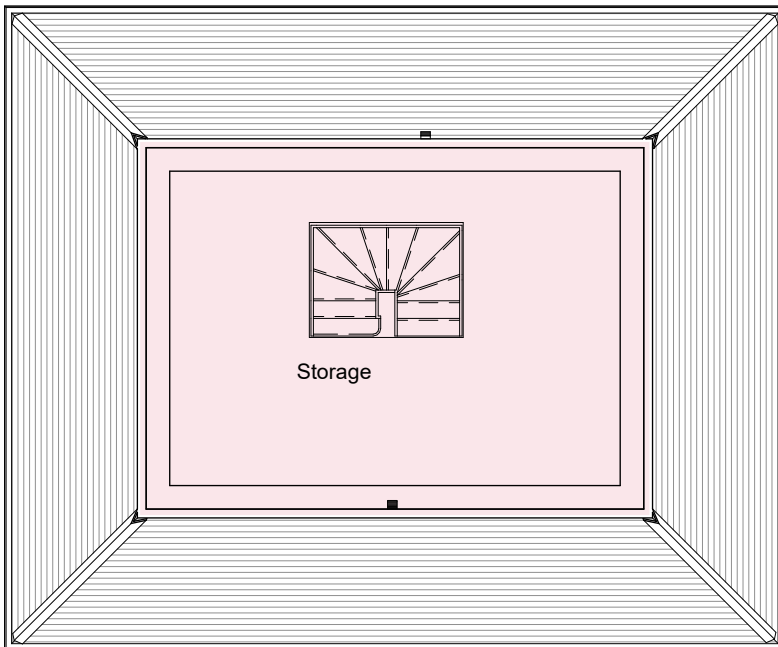


Ground floor



First Floor



Second Floor

**Area Schedule (GIA) - Plot 4**

Area	Area (sqft)
P4 Ground Floor	
70 m <sup>2</sup>	756 ft <sup>2</sup>
P4 First Floor	
61 m <sup>2</sup>	656 ft <sup>2</sup>

**Room Dimensions - Plot 4**

Room	Length (m)	Width (m)	Length (ft)	Width (ft)
Kitchen/Dining Room	8.92 m	3.09 m	29' - 3"	10' - 2"
Living Room	3.32 m	7.69 m	10' - 11"	25' - 3"
Bedroom 1	3.32 m	3.57 m	10' - 11"	11' - 8"
Bedroom 2	3.72 m	4.17 m	12' - 2"	13' - 8"
Bedroom 3	3.13 m	3.21 m	10' - 3"	10' - 6"
Bedroom 4	3.24 m	2.61 m	10' - 8"	8' - 7"
Storage	6.54 m	4.74 m	21' - 6"	15' - 7"

Job Title  
**The Orchards, Great Kimble, Bucks**

Drawing Title  
**Marketing Plan - Plot 4**

Scale  
**1:100 @ A4**

Project Originator Volume Level Type Role Drawing No Rev  
**7038 -ECE -V3 -XX -GA -A -06300\_C1**

Status

**INFORMATION**

C1 05.10.22 Construction Issue SN JB  
 P1 26.08.22 Preliminary Issue SN JB

Rev Date Revision Details Dr Ch



London: 76 Great Suffolk Street  
 London, SE1 0BL  
 T 020 7928 2773 E london@ecearchitecture.com  
 Sussex: 64-68 Brighton Road,  
 Worthing, West Sussex, BN11 2EN  
 T 01903 248777 E sussex@ecearchitecture.com  
 Bristol: Westworks, Beacon Tower,  
 Colston Street, Bristol, BS1 4XE  
 T: 0117 214 1101 E bristol@eceworks.com

**ECE Architecture**  
 www.ecearchitecture.com