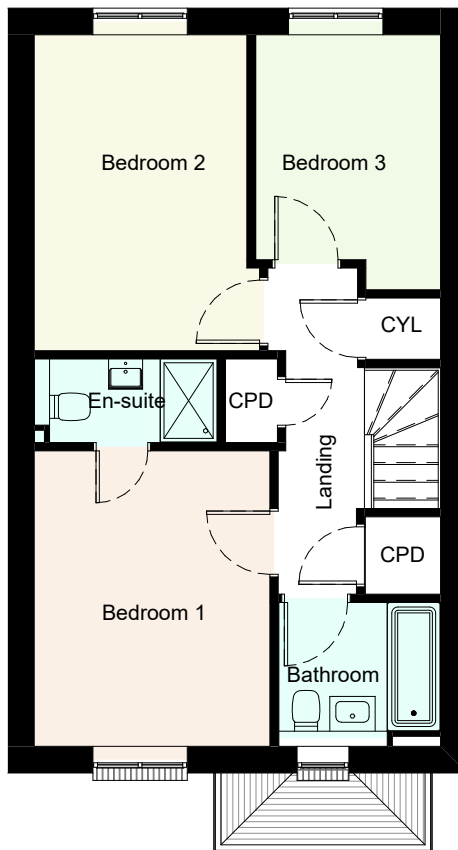


Ground floor



First Floor

Room Dimensions - Plot 3

Room	Length (m)	Width (m)	Length (ft)	Width (ft)
Dining/Family Room	5.35 m	6.25 m	17' - 7"	20' - 6"
Kitchen	2.73 m	3.00 m	9' - 0"	9' - 10"
Bedroom 1	3.09 m	3.88 m	10' - 2"	12' - 9"
Bedroom 2	2.79 m	4.15 m	9' - 2"	13' - 7"
Bedroom 3	2.42 m	3.35 m	7' - 11"	11' - 0"

Area Schedule (GIA) - Plot 3

Area	Area (sqft)
P3 Ground Floor	51 m ² / 552 ft ²
P3 First Floor	51 m ² / 551 ft ²

Job Title
The Orchards, Great Kimble, Bucks

Drawing Title
Marketing Plan - Plot 3

Scale
1:100 @ A4



Project Originator Volume Level Type Role Drawing No Rev
7038 -ECE -V2 -XX -GA -A -06220_C1

Status

INFORMATION

Rev Date Revision Details Dr Ch
C1 05.10.22 Construction Issue SN JB
P1 26.08.22 Preliminary Issue SN JB



London: 76 Great Suffolk Street, London, SE1 0BL
T 020 7928 2773 E london@ecearchitecture.com
Sussex: 64-68 Brighton Road, Worthing, West Sussex, BN11 2EN
T 01903 248777 E sussex@ecearchitecture.com
Bristol: Westworks, Beacon Tower, Colston Street, Bristol, BS1 4XE
T 0117 214 1101 E bristol@ecewestworks.com

ECE Architecture
www.ecearchitecture.com