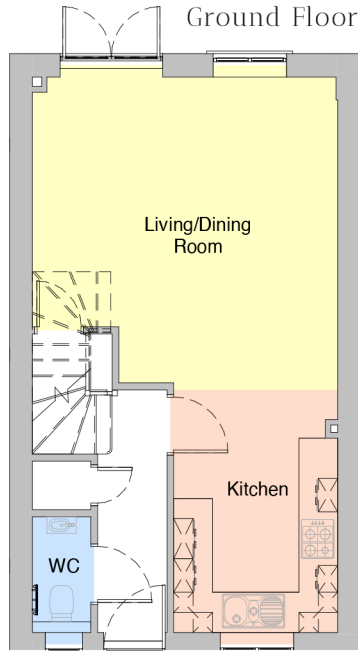


PLOT 9 | 3 BEDROOM SEMI-DETACHED HOUSE

GIA 110M² (1188FT²)

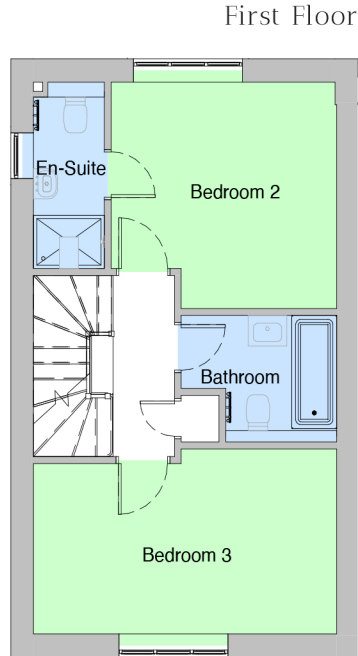


Living/Dining Room

4.6m (15' - 21/2") x 4.7m (15' - 4 1/2")

Kitchen

3.6m (11' - 9 1/2") x 2.5m (8' - 21/2")

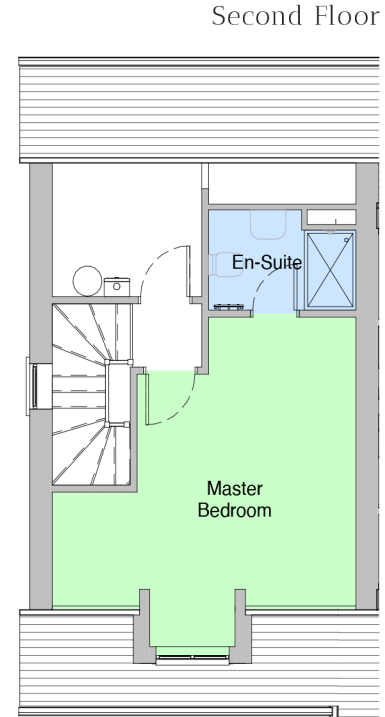


Bedroom 2

3.4m (11' - 1") x 3.5m (11' - 5")

Bedroom 3

2.8m (9' - 01/2") x 4.7m (15' - 41/2")



Master Bedroom

4.1m (13' - 4") x 4.7m (15' - 41/2")